

THE FREDERICK  
CHILDREN'S CHORUS

**SPECIAL  
POINTS OF  
INTEREST:**

- All rehearsals and musicianship resume on January 17!
- We're going tubing in January. Come join us for some fun in the snow!
- The Maryland Young Voices Festival is coming up on February 11. See all the details inside.

**INSIDE  
THIS ISSUE:**

Spring Concert Date	2
Tubing Information	2
MD Young Voices Festival	3
Little Music Makers	3
Touring Ensemble Updates	4
Girl Scout Event	5
Calendar of Events	6

# THE TREBLE VOICE

*Raising Young Voices in Song for Over 25 Years!*

OFFICEMANAGER@FREDCC.ORG  
301-845-2451

10716 ETZLER MILL ROAD  
WOODSBORO, MD 21798

JUDY DUBOSE  
FOUNDER AND DIRECTOR

WWW.FREDCC.ORG

JANUARY/FEBRUARY 2012

## From the Director



*Dear Parents and Singers,*

With the first concert now behind us, (and what a great concert it was!), we have a very full and exciting spring ahead. As we return to rehearsals and musicianship classes, the Concert Chorus and Chamber Chorus singers will perform in just four weeks when we host the Maryland Young Voices Festival in Frederick on February 11th. This is a wonderful event which was begun about seven years ago. We last hosted this festival four years ago. The festival features three local choruses: The Annapolis Area Children's Chorus, Glorystar Children's Chorus, and The Frederick Children's Chorus. The choruses will rehearse together during the day, preparing songs directed by each of the chorus directors. In the evening each chorus will present a short program before they perform together for parents. This day always generates encouraging and positive comments from parents, as they realize that our chorus program is special, but that other programs similar to ours exist so nearby. This concert is only a few weeks away, so we need all of our Concert Chorus and Chamber Singers putting in some serious practice time at home. The good news is that these songs will nearly all be in our next concert as well. Once they are learned, we can turn to the rest of our program and practice it with a little less urgency. Training Chorus does not perform in the festival, but families are encouraged to come out with their Training Chorus Singers to hear the concert. The concert will be in the All Saints Episcopal Church just a block away from our usual rehearsal site. See the calendar for details.

I look forward to seeing you all on the tubing slope on January 27. I hope you all come out and enjoy the fun. (And I guess we have to hope for snow, as much as I would prefer it stayed further to the north all winter.)

Looking back, the December concert was really beautiful. The choruses were well prepared thanks to all those practice logs. Each chorus presented themselves and their music beautifully. The Chamber Singers had some really exceptional performances. The Student Conducting Interns were excited about their first conducting opportunity, and their performances were terrific. Finally, the assistant directors did a great job guiding the singers on and off stage, and helping them to line up off stage so that they were ready for each entrance. You may have wanted to order a CD or DVD of the concert. It is not too late. The concert orders should be available for pick up at the first rehearsal on January 17. Late orders are possible and will be available just a few weeks after the order is placed. Remember, payment is due with your order, and order forms can be found on our website.

The Chamber Singers presented an outstanding Messiah Sing-along at the Weinberg Center on December 22. Those of you who have never attended the Messiah Sing-along really should add it to your holiday "must-do" list. Our four soloists were very professional and exciting. Jenna Lebherz Daly was a children's chorus member until 2001. It's so great to have her come back as a professional vocalist and treat us to a special performance. We were delighted to see so many alumni and families in the audience as well. We nearly hit the 500 ticket sales mark for the first time. And most of those 500 sang the choruses with great enthusiasm. We couldn't do it without our terrific orchestra. Most of our musicians play for us every year. They look forward to it as much as we do and practically volunteer their performance. One of those orchestra members was another chorus alumnus, Andrew Nixon, who graduated from our chorus in 2004. Now he is a doctoral candidate at Brown University. He is majoring in some kind of extreme theoretical math (not music), but he's pursued these advanced degrees while singing and playing in the university orchestra at Rensselaer Polytechnical Institute. Andrew's mother is our ticket sales manager, Romana Nixon. Andrew is exceptional; he virtually taught himself to play piano, violin, and viola without the usual private lessons and group lessons in school. He was a terrific chorus member and enjoyed being the "coach" for the Chamber Singer boys' songs.

It is my most sincere wish that your family finds the coming year one filled with happiness and sharing, and that you and your children celebrate the experiences today, and build memories to share in the future. I am grateful for all of you who value the experience provided to you and your children by the Children's Chorus and who share your talents and skills to make the chorus an even better organization.

Happy New Year Everyone!

Sincerely, *Mrs. DuBose*

## Spring Concert Date Confirmed

Our spring concert date has been confirmed as May 5, 2012. It will again be held at Linganore High School at 7:30pm.

Mandatory rehearsal dates will be May 1, 3, 4, and 5 for all singers. Please reserve these dates on your calendars! The only excused absences for these rehearsals are school concerts. Please let us know of these conflicts in writing at least two weeks prior to rehearsal week.



*Our Saturday morning concert rehearsal was full of a lot of hard work and a lot of fun!*

## Thank You to our Concert Volunteers and Chorus Families!

Thank you to all the parents and families that helped our December concert go off without a hitch! So many of our committee chairs and committee members really stepped up and helped out in so many ways. We truly could not do it without all of you—thank you!!!

We'd also like to thank Music and Arts for sponsoring the guitar raffle again this year. Congratulations to the winner—Penny Owens! We hope you enjoy it and your free lessons!

We received many donations to the chorus in the last couple months of the year and truly thank all who thought to include the chorus in your charitable giving. The chorus is a non-profit organization and all donations are tax-deductible. By mid-January all of you should have received a letter from the office to process with your taxes to report your donation. If you do not receive one, please contact Gina Ekanger at [officemanager@fredcc.org](mailto:officemanager@fredcc.org).



## Concert Recordings—CDs and DVDs



Recordings from our winter concert are ready for pick-up! Please stop by the attendance table on Tuesday to pick up your orders. If you requested that yours be shipped, they should arrive before rehearsals begin.

If you did not yet order a recording, you can still do that, too! Recordings of past performances are always available as well. Please email us at [officemanager@fredcc.org](mailto:officemanager@fredcc.org) or leave your order form with Mrs. Farrell at the attendance table if you wish to place an order. CDs are \$20 and DVDs are \$30.

## Winter Chorus Social—Snow Tubing!

Bring your friends, bring your entire family and join the chorus for a night of good old fashioned wintertime fun at Boulder Ridge Snow Tubing! Snow Tubing is a blast and best of all, no experience is necessary! Our group is scheduled to tube on Friday, January 27th from 6 to 8 pm. Anyone age 5 or older is invited to attend. Those not so interested in a brisk flight down the hill can enjoy watching from the lovely heated lodge. Boulder Ridge boasts:



- 15 expertly carved lanes
- A covered moving carpet lift
- A Beautiful two level log lodge with wrap around observation deck
- A variety of options in their concession stand

The chorus has a group reservation which offers the discounted price of \$20 per tuber. All who tube must complete and submit a waiver form when you register. Those who choose to watch from the lodge are free. Please see the flier for more information. The registration deadline is January 17th, 2012. The registration and waiver can be found at the end of this newsletter.

For more information about the facility and directions, visit their website: [Snow Tubing at Boulder Ridge](http://www.boulderridge.com).

## Maryland Young Voices Festival

This year the Maryland Young Voices Festival is being hosted by The Frederick Children's Chorus. It is being held at All Saints Episcopal Church located at 106 W. Church St., Frederick MD 21701 on February 11<sup>th</sup>, 2012.

**Meeting Time:** 9:30 a.m. until after concert (around 9:00 p.m.)

**Place** All Saints Episcopal Church, 106 W. Church St. Frederick

**What to Wear:** Jeans, sneakers, chorus t-shirt (the black one)

**What to Bring:**

- Re-sealable water bottle with name clearly written on it (reusable bottles are best, like Nalgene plastic or stainless steel, but make sure it has your singer's name on it!)
- Bag containing lunch and additional snack with name clearly written on it (brown bag is best so your singer doesn't have to remember to bring home a lunch box after the festival – this cuts down on Lost and Found items)
- Black concert binder with singer's name clearly written on the inside cover, sharpies are best for this. The binder should contain ONLY the festival music, your singer should remove all our other music for spring and put it on their bed for the day, and 2 pencils
- Concert attire in garment bag with name clearly written on it.

**Concert:** 7:30pm All parents are encouraged to attend the free concert at the end of the day and let our singers show you what they learned! Donations will be accepted to help each chorus with expenses associated with producing the festival.

**Please note that this is a mandatory obligation for all Concert and Chamber Chorus members. Requests to be excused must be received in writing via e-mail to [officemanager@fredcc.org](mailto:officemanager@fredcc.org) by no later than January 27<sup>th</sup>, 2012.**

The cost to participate is \$20 per singer and includes the following: vocal workshops led by our participating directors, festival music, snacks and dinner. Dinner will be a pasta bar with salad, rolls, beverages, and dessert. If the cost to participate will cause financial hardship please contact a member of the FCC Staff. The registration form can be found at the end of this newsletter and is due by January 24<sup>th</sup>.

*We will need a few Chamber Singers to arrive early and help out with greeting and directing singers from the choirs as they arrive. If you are interested and able to help out, please contact Mrs. Fuhr.*

## Chorus Staff Changes



We are happy to welcome Chelsey Crowder to our staff this semester. She was a member of the chorus for 12 years and will be joining us again to work with our Little Music Makers and Musicianship classes. She will be graduating from Liberty University this spring with a Bachelor of Music Degree in Vocal Performance.

We are sorry to lose both Ms. Beth Wagner and Mr. Ed Bower this semester due to scheduling conflicts. We thank them both for all they've done and hope that they'll be able to rejoin us soon! Mrs. Alisa Jackson will be accompanying FCS on Tuesday nights while Ms. Crowder will be taking over for Ms. Wagner in musicianship classes.

## Little Music Makers

Our Little Music Makers had a great concert the evening of December 20 at the ERUCC Sanctuary. We welcomed the beginning of winter with songs for the holidays, the season, and some other fun pieces. Our singers did a great job singing in parts, unison, and even in a round. They also were wonderful in giving the spoken introductions to each piece. Each singer received a certificate of completion for the winter semester.

Next, in January Ms. DuBose headed up to the Thurmont Library and held a session of singing and games for the library patrons in attendance. The children who attended got a good introduction to our program and were invited to join us this semester. We hope to see them again soon!

Our spring semester of Little Music Makers will be starting up on January 17 at 5:00 in Trinity Chapel. On January 17 we will be holding a free introductory session with an orientation. Class will officially start the next week on January 24. Registration will remain open until January 24. So if you know any singers aged 5-8, invite them to join us!

To all our new Little Music Maker families, welcome to the Spring 2012 session! We are very excited to have you on board and hope you and your child enjoy all that the chorus has to offer. Our goal is to provide as positive an experience as possible. If you should ever have any questions or concerns, please feel free to contact Gina Ekanger at [officemanager@fredcc.org](mailto:officemanager@fredcc.org).

Our Little Music Makers staff this semester will be Ms. Ann DuBose, Mrs. Jackson, Mrs. Wardell, and Ms. Crowder. Our interns will be Timmy Huth, Jordyn Shaffer, Molly Cohen, and Katey Hallock. We look forward to see all of our singers again soon!

## Touring Ensemble Updates

### Touring Ensemble Fundraising:

Reminder.....TE Fundraising Committee Meeting – January 17<sup>th</sup>, 6:00 pm ERUCC

December fundraisers for the Touring Ensemble went very well! The singers earned nearly \$1170, caroling downtown, wrapping gifts at Barnes & Noble, and on the silent auction the night of the concert. We do not yet know the results of the light show coupons at Adventure Park, but are looking forward to the results. Many thanks to all who supported these efforts and helped to support these singers! Our next grand effort is to plan, prepare, and serve the dinner and reception to the Maryland Young Voices Festival participants. Members will be seeking donations of gift cards and groceries to help us provide the best pasta bar ever! Any who would be interested in supporting this effort through donations of grocery cards or food, please contact Gina Ekanger at [officemanager@fredcc.org](mailto:officemanager@fredcc.org). All who are interested in getting involved in Touring Ensemble fundraisers are invited to attend our next scheduled committee meeting on January 17<sup>th</sup>, 2012. We will be working on our upcoming events and considering any new options brought to the table. Statements of account plus suggested monthly payment amounts will be provided once our current fundraisers have been tabulated.

### 2012 Sing A Mile High Festival Updates:

We were very excited to receive a copy of the commissioned piece for the festival in Denver and even more excited when we learned that it was **Jabberwocky** arranged by Dr. David Brunner! This piece, for those who have sung other versions, will prove to be new and exciting with unexpected twists and turns. We are anxious to see it come together!



### Touring Ensemble Wardrobe:

If you are a touring ensemble member and have not yet been measured or received your performance gown or tuxedo shirt and vest, please contact Gina Ekanger immediately at [officemanager@fredcc.org](mailto:officemanager@fredcc.org). All TE members will wear the new Chamber Singer women's gown and the Chamber singer men's tuxedo shirt and vest. The touring ensemble polo shirts will be ordered this month. Please remember that you will also need to provide a pair of tan or khaki dress pants as well.

### Upcoming Touring Ensemble Obligations:

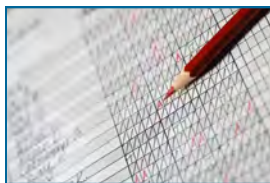


**February 11<sup>th</sup>** – Maryland Young Voices Festival for Kitchen Duty! All current TE members who would like to benefit financially from the festival are expected to be present to help prepare, serve, and clean-up dinner for festival participants. (Don't worry, like all else we have gotten ourselves into thus far, we will find a way to have fun! Those unable to be present, but who support the effort through donations of gift cards and supplies, will also benefit.)



*The Little Music Makers put a lot of hard work into performing at a great concert for their friends and families.*

## Rehearsal Attendance Policy



1. Be sure to arrive on time. If you are late, check in at the attendance table to see that you were marked present after the rehearsal is over.
2. Singers may miss a total of three (3) rehearsals between January 17th and the May 5th concert. Illness or family conflicts are good reasons to miss a rehearsal.
3. Remember, the only excused absences for **mandatory rehearsals on concert week** are for GRADED school choral, band, or orchestral concerts. You should notify us in writing as soon as you are aware of the conflict, but no later than 2 weeks prior to the event. If your child is enrolled in a choral, band, or orchestra program at school, and you haven't heard about a fall concert, you should call to ask. This has been our mandatory concert week policy for many, many years. Singers and parents who do not notify us prior to 2 weeks before the concert may be asked not to sing in the concert as this causes us to have to rebuild seating charts and rehearsal plans for the mandatory rehearsals. You may think that one child's attendance doesn't make a difference, but it really does!
4. We may also rehearse on days with inclement weather if there is an improvement by late afternoon. **If you are uncertain, please check our website's homepage at [ww.fredcc.org](http://ww.fredcc.org) after 4pm on Tuesdays. We will also do our best to notify everyone via e-mail.**
5. If you have an emergency on the night of a mandatory rehearsal, please call Mrs. DuBose's cell phone immediately - 301-524-1132. If you don't call us, we may be calling you.

## Happy Birthday in January and February!

Justin Whitmore	1/2/2001	Concert Chorus
Genevieve Lohr	1/3/1998	Concert Chorus
Natalie Sanino	1/8/1996	Chamber Singers
Grayson Huyck	1/11/1999	Concert Chorus
Kimberly Paz	1/19/1998	Concert Chorus
Christopher Bower	1/20/1994	Chamber Singers
Katherine Atwell	1/27/1998	Concert Chorus
Rebecca Moorman	2/7/1996	Chamber Singers
Hannah Snyder	2/14/2000	Concert Chorus
Katherine Duckworth	2/14/2005	Little Music Makers
Paul Oddo	2/16/2001	Concert Chorus
Raeann Robisch	2/17/1995	Chamber Singers
Jenna Hallock	2/17/1998	Concert Chorus
Molly Cohen	2/19/1996	Chamber Singers



Soloists, musicians, Mrs. DuBose, the Chamber Singers, and a great audience came together to celebrate the season at the Messiah Sing-Along at the Weinberg Center.

## Let There Be Music—Girl Scout Event



Registration and planning has begun for our March 3<sup>rd</sup> “Let There Be Music” event for Girl Scouts! At these events, led by our older members, we provide age-appropriate musical activities to Girl Scouts that allow them to earn badges they may not have attempted otherwise. In addition to leadership and service opportunities for our FCS members and exposure for the chorus in Frederick County they also help to raise needed funds. The events are a win, win, win opportunity! This year the event is planned for one day with Girl Scouts in grades K through 3 attending in the morning and older scouts attending in the afternoon. If there is a Girl Scout in your family who would like to attend, have her suggest the opportunity to her troop. If her troop cannot attend, please contact Gina Ekanger. A scout is eligible to attend on her own without her troop.

### Note to Chamber Singers:

Attendance at this event is considered mandatory. A Doodle will be sent out to confirm your attendance. Please arrive dressed in your chorus t-shirt, jeans and sneakers, by 8:30am on the morning of March 3<sup>rd</sup> and plan to stay until 3:30 in the afternoon. There is a break in between sessions and lunch will be provided!!

### Note to 7th and 8th Grade Concert Chorus Members:

We would like to invite you to attend as well and help the staff and Chamber Singers in leading activities. Your participation in the activities would also help as well. It's also a great opportunity to learn what the Chamber Singers do at events such as these. A Doodle will be sent out to confirm your attendance.

## Scrip is Growing!

The scrip order processed in December was the largest order we have ever placed! Many thanks to all who ordered and even more to those of you who thought to include friends, family and co-workers! With only two orders placed for the 2011/2012 season our members have purchased 418 gift cards, valued at over \$8600 earning the chorus \$630 for purchasing items we had to buy any way. Not to shabby and even better yet imagine our potential. The next order is due Tuesday, January 31<sup>st</sup>, cards will be delivered February 7<sup>th</sup>. The order form can be downloaded from our website, [www.fredcc.org](http://www.fredcc.org). Gift card ideas for February:

- Give \$2 Baskin Robin Coupons as Valentines
- How about a visit to a spa or dinner out for that special someone or just you?
- Movie tickets to cure cabin fever
- Grocery cards for comfort food and other winter cravings
- Department store cards to take advantage of winter clearance sales.
- Gas cards to get the heck out-of-dodge to see something new!



# The Frederick Children's Chorus

*Raising Young Voices In Song For Over 25 Years!*

## Regular Tuesday Rehearsal Schedule

TC Musicianship 5:00-5:45 and 7:15-8:00—Trinity Chapel  
 Little Music Makers 5:00-6:00pm—Trinity Chapel  
 CC Musicianship 6:15-7:00pm—Trinity Chapel  
 Training Chorus Rehearsal 6:00-7:00pm—Social Hall  
 Concert Chorus Rehearsal 7:15-9:00pm—Social Hall  
 FCS Rehearsal 7:00-9:00pm—Main Sanctuary

## Calendar of Events Jan/Feb 2012

Please arrive 15 minutes early to each event. If you arrive late, be sure to check in with the director at the end of the rehearsal. Bring all of your music to each rehearsal. In case of treacherous weather, check the website and look for an e-mail with rehearsal updates.

## 2012

### ALL Rehearsals Resume

Date: Jan 17—All choruses resume regular schedule  
 Note: All FCS rehearsals will take place on Tuesdays 7:00-9:00 in the spring

### Travel Fundraising Committee Meeting

Date: Jan 17—6pm—Meet at the attendance table  
 All who want to help fundraise for this year's AND future trips are welcome to attend.

### Little Music Makers Resumes!

Date: Jan 17—Orientation—5-6pm in Trinity Chapel  
 Date: Jan 24—First Class—5-6pm in Trinity Chapel

### Chorus Social—Tubing!

Date: January 27—6-8pm  
 Location: Boulder Ridge at Liberty Mountain Ski Resort  
 Tickets are \$20 per person who participates in the tubing. Parents CAN attend without paying if they don't want to tube. If families want to eat there, meal vouchers are available for \$9.50/person.

### CC and FCS—MD Young Voices Festival (Mandatory)

Date: Feb 11 from 9:30 am - 10 pm  
 Concert begins at 7:30pm  
 Location: All Saints Episcopal Church, Frederick, MD

### ACDA Eastern Division Convention, Rhode Island

Date: Feb 15-19—Directors will be out of town

### TE—Performance at E&R Church Sunday Service

Date: February 19 at 10:00am for warm-up with service beginning at 10:30. Dismissal following end of service, approx. 11:30-11:45.

All FCS and CC members are invited to attend as well. Everyone please arrive dressed in your performance uniform.

### Let There Be Music Girl Scout Event

Date: March 3  
 Time: Staff and FCS/CC Helpers arrive at 8:30am for setup  
 Junior Scouts 9-11am; Teens 1-3pm  
 Volunteers plan to stay until 3:30pm  
 Location: E&R Church

### CC/FCS—Performance at E&R Church Sunday Service

Date: March 25 at 10:00am for warm-up with service beginning at 10:30. Dismissal following end of service, approx. 11:30-11:45.

*This event is mandatory for all CC and FCS.*

### ALL—No Rehearsal

Date: April 3—Rehearsals will not be held. Only LMM will be meeting. All staff and interns will attend LMM.

### ALL—Bring A Friend Ice Cream Social

Date: April 10  
 Bring a friend to experience a regular rehearsal and play some musical games with us!

### MACHE Home School Book Fair—Recruiting Event

Date: April 13-14  
 Location: Frederick Fairgrounds  
 FCS members are asked to sign up for a shift at the table. We need 6 FCS total to help with this event, 2 for each of 3 shifts

### Little Music Makers Concert

Date: Apr 17—Concert begins in Sanctuary at 5:30pm  
 Singers report to Social Hall at 4:45pm

### LMM and TE (+TE Invitees)—Frederick Children's Festival

Date: April 28  
 We want to showcase our singers so the parents at the Festival see what their children could be doing if they joined the chorus.

### ALL—Spring Concert Week

Rehearsal Dates: All singers May 1 (ERUCC), 3 and 4 (Linganore HS)  
 All Choruses reserve 6-9 pm for rehearsals  
 All singers May 5 Rehearsal 8:45 am-12:00 noon  
 Concert Date: May 5 – Linganore High School  
 Concert call for all singers—6:45 pm  
 Concert begins at 7:30 pm

### New Member Orientation

May 8 at 6:00 pm—ERUCC Social Hall

### ALL BOYS—Baltimore Boychoir Festival

Dates: May 18—5-9:30pm  
 May 19—8:45am—9:30pm with concert at 7:30pm  
 Location: 3400 Norman Avenue, Baltimore, MD 21213  
 This event is optional for all boys in ALL choruses. We will have more information and sign-ups in March.

### New This Year – No Year-End Evaluations

We will be video taping evaluation exercises in musicianship classes during the month of April for evaluations this year. The staff will watch back the tape together to write up the year-end evaluations. Evaluations will still be mailed after camp has concluded for the summer.

### TE—Sing a Mile High Festival Rehearsals

Tuesday, May 15<sup>th</sup>, 2012 – 6 to 8 pm  
 Tuesday, May 22<sup>nd</sup>, 2012 – 6 to 8 pm  
 Tuesday, May 29<sup>th</sup>, 2012 – 6 to 8 pm  
 Tuesday, June 5<sup>th</sup>, 2012 – 6 to 8 pm  
 Tuesday, June 12<sup>th</sup>, 2012 – 6 to 8 pm  
 Tuesday, June 19<sup>th</sup>, 2012 – 6 to 8 pm  
 Tuesday, June 26<sup>th</sup>, 2012 – 6 to 8 pm

### Summer Camp

June 18-22 at Tuscarora Recreation Center  
 July 9-13 at Walkersville Recreation Center  
 Chorus members will receive registration forms from us in April. Chorus members should register with us—NOT through the county.

### Late New Member Orientation

July 17 at 6:00 pm—ERUCC Social Hall

**ABBREVIATIONS:** TC = TRAINING CHORUS      CC = CONCERT CHORUS  
 FCS = FREDERICK CHAMBER SINGERS      LMM = LITTLE MUSIC MAKERS  
 TE = TOURING ENSEMBLE

# Winter/Spring 2012 Schedule

Sunday	Monday	Tuesday	Wednesday	Thursday	Friday	Saturday
1—JAN	2 — WINTER	3 —	4 —	5 —	6—BREAK	7—>>> LMM Event at Thurmont Library 10:30am
8 —	9 — WINTER	10 —	11 —	12 —	13—BREAK	14 —>>
15 —	16 —	<b>17- Rehearsal Resumes</b> LMM Orientation Travel Fundraising Mtg - 6pm	18	19	20	21
22	23	24—Rehearsal First LMM Class	25	26	27— Snow Tubing 6-8pm	28
29	30	31—Rehearsal	<b>1—FEB</b>	2	3	4
5	6	7—Rehearsal	8	9	10	11-Young Voices Festival 9:30am-10pm
12	13	14—Rehearsal	15	16	17	18
19-TE Performance at ERUCC Church- 10:30am	20	21—Rehearsal	22	23	24	25
26	27	28—Rehearsal	29	<b>1—MAR</b>	2	3-Girl Scout Event- 8:30am-3:30pm
4	5	6—Rehearsal	7	8	9	10
11	12	13—Rehearsal	14	15	16	17
18	19	20—Rehearsal	21	22	23	24
25—CC/FCS Perform at ERUCC Church—10:30am	26	27—Rehearsal	28	29	30	31
<b>1—APR</b>	2	3—NO Rehearsal LMM Meets	4	5	6	7
8	9	10—Ice Cream Social	11	12	13—Home School Book Fair	14—Home School Book Fair
15	16	17—LMM Concert— 5:30pm	18	19	20	21
22	23	24—Rehearsal	25	26	27	28—Frederick Children's Festival
29	30	<b>1—MAY</b> Mandatory Rehearsal— 6-9 pm—ERUCC	2	3- Mandatory Rehearsal— 6-9pm— Linganore HS	4- Mandatory Rehearsal— 6-9pm— Linganore HS	5—Reh 8:45am-noon Concert call— 6:45pm
6	7	8—New Member Orientation	9	10	11	12
13	14	15—TE Rehearsal	16	17	18—Boychoir Festival	19—Boychoir Festival
20	21	22—TE Rehearsal	23	24	25	26
27	28	29—TE Rehearsal	30	31	<b>1—JUNE</b>	2

# The Maryland Young Voices Festival



Proudly Hosted by the Frederick Children's Chorus  
 February 11<sup>th</sup>, 2012  
 All Saints Episcopal Church, Frederick, MD

We are thrilled to announce this year's details for the 2011 Maryland Young Voices Festival! This year the festival is being hosted by The Frederick Children's Chorus. Is being held at All Saints Episcopal Church located at 106 W. Church St., Frederick MD 21701 on February 11<sup>th</sup>, 2012. We are please to have the following Artistic Directors and their choirs participating:

 Judith Dubose – The Frederick Children's Chorus   
 Cherie Jeng – Glory Star Children's Chorus  
 Julie Culotta – All Children's Chorus of Annapolis

All singers will be treated to opportunities to expand their vocal skills by spending a session with each Artistic Director, rehearsing and performing songs with not only their home chorus but as a group with all participating choruses. Singers will also grow through icebreaker activities and team building games. After a full day of vocal fun and new experiences, singers from all choruses will hold a performance at 7:30 pm. A cake reception will follow.

***Please note that this is a mandatory obligation for all Concert and Chamber Chorus members. Requests to be excused must be received in writing via e-mail to [officemanager@fredcc.org](mailto:officemanager@fredcc.org) by no later than January 27<sup>th</sup>, 2012.***

The cost to participate is \$20 per singer and includes the following: vocal workshops led by our participating directors, festival music, snacks and dinner. Dinner will be a pasta bar with salad, rolls, beverages and dessert. If the cost to participate will cause financial hardship please contact a member of the FCC Staff. As an option, each singer may also purchase or participate in the following:

- A festival T-shirt - \$12.50
- Festival Logo Design Contest! This will be the t-shirt! All designs must be submitted to FCC Staff by January 20th, 2012. Submissions can be in color and should reflect the "spirit" of singing.

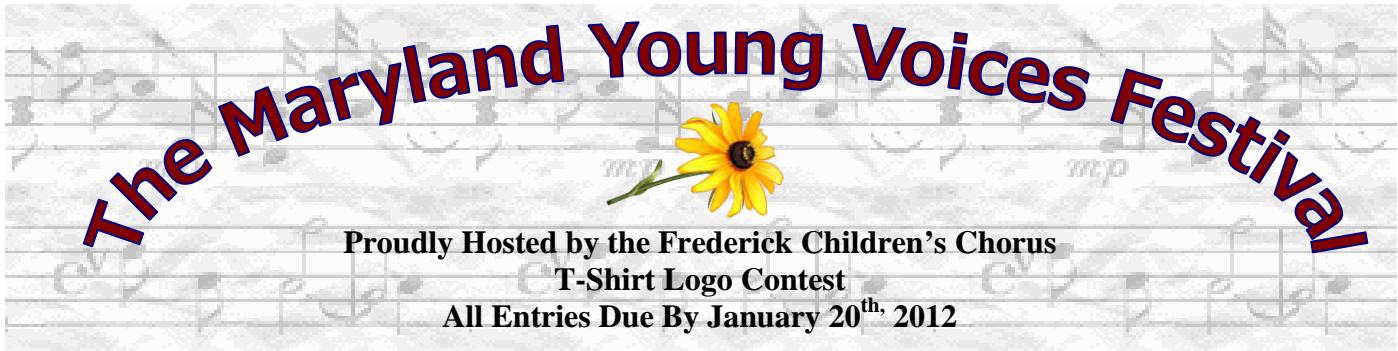
**All registration forms are due by January 24th, 2012**

My singer, \_\_\_\_\_, will  will not  participate in the MD Young Voices Festival.

We will pay the following festival fees:

- Per person 2011 Maryland Young Festival participation fee: \$ 20.00
- Our singer would like to order a festival t-shirt: # \_\_\_\_\_ x \$ 12.50 = \$ \_\_\_\_\_
  - o T-shirt Size: YM  YL  AS  AM  AL  A-XL

- Total owed, made payable to: \$ \_\_\_\_\_



Proudly Hosted by the Frederick Children's Chorus  
T-Shirt Logo Contest  
All Entries Due By January 20<sup>th</sup>, 2012

Calling all artists! You are invited and encouraged to submit a design for a festival logo to be displayed on this year's Maryland Young Voices Festival t-shirts! You may use many ideas as your muse.....but should try to include the following:

- The Festival Name:
  - o The Maryland Young Voices Festival
- The Year:
  - o 2012
- Something specific to Maryland.
- Something specific to singing, chorus or music
- They can be in color, but due to the size of the area they will be printed, tiny details may be lost.

**Please submit the following information with your design:**

Chorus Name: \_\_\_\_\_

Singer's Name: \_\_\_\_\_

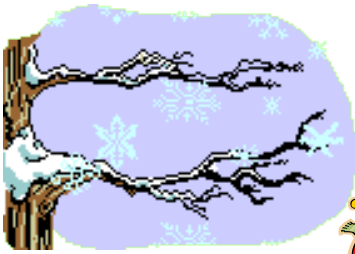
Home Address: \_\_\_\_\_  
\_\_\_\_\_

Phone Number: \_\_\_\_\_

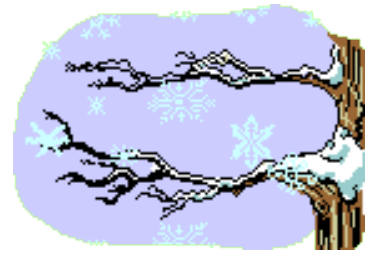
E-mail: \_\_\_\_\_

**All entries are due by January 20th, 2012!**  
**Please mail your entry to The Frederick Children's Chorus office at:**

The Frederick Children's Chorus  
2011 Festival T-Shirt Contest  
10716 Etzler Mill Road  
Woodsboro, MD 21774



**Winter Fun.....Here We Come!  
Friends & Family Snow Tubing Social  
January 27<sup>th</sup>, 2012, 6 to 8 pm**



Whoohoo!

Please bring your family plus even your friends and join the chorus for a great night of frosty fun snow tubing at Ski Liberty's Boulder Ridge! All can participate, only those who tube have to pay. The tubing hill at Boulder Ridge is fabulous and comes equipped with a people mover that takes you back up the hill! For those who do not desire a brisk trip down the slope at mach one, the lodge is for you! It is equipped with fireplaces, tables, restrooms, plenty of others to socialize with and best of all.....warm drinks. Tubers on the big hill need to be age 5 or older, for our younger dare devils for a reduced charge there is a kiddie slope with kiddie tubes. In addition to tubing, you may also purchase meal vouchers for \$9.50 each of which can be used at the concession stand in the lodge and allow guests to purchase a meal at a reduced cost. All participants must pre-register and pre-pay. I will be purchasing our tickets in advance. Please plan to arrive well before 6 so that your party is ready to hit the hill promptly at 6!



Awesome!

**Prices:**

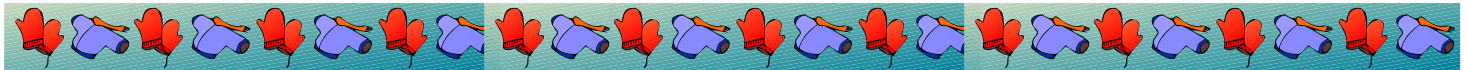
- One Unlimited 2-Hour Pass for Tubers 5 and Older from 6 to 8 pm: \$20 *(This is a significant savings!)*
- One Kiddie Tube for Tubers age 2 to 4: \$7
- A seat in the lodge to socialize, laugh and enjoy some downtime: Free!

**Guidelines:**

This is a Friends & family event, not all who attend are required to pay to tube, but each singer and friend in attendance must have an adult chaperone in attendance who is prepared to handle any emergencies or other needs that may come up. **All tubing participants must complete the attached waiver from Boulder Ridge, no exceptions.**



Oh Oh!



**Registration Form**  
**Please submit by January 17<sup>th</sup>, 2012!**



Let's do that again!

The \_\_\_\_\_ family is going to participate in the Friends and Family Snow Tubing Social!

We will need the following number(s) of tickets:

- Chorus Members, Parents and Siblings age 5 & over: # \_\_\_\_\_ X \$ 20.00 each = \$ \_\_\_\_\_
- Friends of the chorus members, all age 5 & over # \_\_\_\_\_ X \$ 20.00 each = \$ \_\_\_\_\_
- All Kiddie Tubers ages 2 to 4 years old: # \_\_\_\_\_ X \$ 7.00 each = \$ \_\_\_\_\_
- Optional Meal Vouchers for all members of your party: # \_\_\_\_\_ X \$ 9.50 each = \$ \_\_\_\_\_
  - Total Amount Owed, Made Payable to The Frederick Children's Chorus: \$ \_\_\_\_\_

**If your singer(s) will be carpooled and chaperoned by another family, please list their names & cell phone numbers below:**

- Our children will be chaperoned by the following adult(s):
  - Name \_\_\_\_\_ Cell Phone # \_\_\_\_\_
  - Name \_\_\_\_\_ Cell Phone # \_\_\_\_\_

**BOULDER RIDGE, WHITETAIL ADVENTURE & CANNONBALL RUN TUBING  
RELEASE & ASSUMPTION OF RISK AGREEMENT**

NAME: \_\_\_\_\_  
Please Print

DATE: \_\_\_\_\_  
Tubing Date

ADDRESS: \_\_\_\_\_

E-MAIL: \_\_\_\_\_

GROUP NAME (if applicable): \_\_\_\_\_

**NOTICE OF RISK**

I, the undersigned, do hereby understand and agree that the recreational sport of snow tubing contains inherent and other risks that could lead to serious injury or death. These risks include, but are not limited to, falling out of the tube, traveling at various rates of speed, collisions with other tubes, tubers, or spectators, collisions with man-made objects, such as: fencing, snowmaking and grooming equipment; collisions with natural objects, collisions with associated equipment, variations in terrain and steepness of terrain, varying surface conditions such as; ice, ice chunks and wet or slushy snow, slippery walking surfaces, and the use of the tubing lifts.

I further agree to inspect the tubing area, tubing slope, tubes and all associated equipment prior to any use of the same. I agree to read, understand, follow or ask for explanation of all the rules, policies, and tubing responsibility codes that are posted at the tubing area. I understand that I can ask for and will receive instructions on the use of the tubing slope and the tubing lift prior to any use of the same. I further understand and agree that my minor child must be a minimum of five years old in order to use the main tubing slope.

**I accept for use, AS IS, the tubing area including the tubing slope, tubing lift, tubes and other associated equipment.**

**ASSUMPTION OF RISK**

Understanding, acknowledging and agreeing to all of the risks involved, **I hereby agree to expressly and voluntarily accept and assume all risks involved in the sport of snow tubing.**

**RELEASE OF LIABILITY**

In consideration of being allowed to use the tubing area at Liberty, Whitetail or Roundtop, **I HEREBY AGREE NOT TO SUE AND TO RELEASE, SKI LIBERTY OPERATING CORP., WHITETAIL MOUNTAIN OPERATING CORP. AND SKI ROUNDTOP OPERATING CORP., AS WELL AS THEIR OWNERS, AGENTS AND EMPLOYEES FROM ANY AND ALL LIABILITY RELATED TO INJURY, PROPERTY LOSS OR OTHERWISE RELATED TO MY USE OF THE TUBING FACILITY, REGARDLESS OF ANY NEGLIGENCE ON THE PART OF THE SAME. I FURTHER AGREE TO INDEMNIFY AND DEFEND THE SAME, FROM ANY CLAIM FOR LIABILITY RELATED TO INJURY AS A RESULT OF MY OR MY CHILD'S USE OF THE FACILITIES, REGARDLESS OF ANY NEGLIGENCE, RECKLESSNESS OR IMPROPER CONDUCT.**

I agree that all disputes arising under this contract shall be litigated exclusively in the Court of Common Pleas of the County in which the incident occurred or in the United States District Court for the Middle District of Pennsylvania. Further, this agreement is governed by the applicable laws of the state of Pennsylvania. If any part of this agreement is determined to be unenforceable, all other parts shall be given full force and effect.

**If I do not agree with the above, I will not use the tubing facility.**

I, the undersigned have read, understand and agree to be legally bound by the above release agreement.

Tubing participant signature: \_\_\_\_\_ Date \_\_\_\_\_  
(If a minor (under 18), the signature of a parent or guardian is required)

Parent or Guardian Signature: \_\_\_\_\_ Date \_\_\_\_\_  
(The signature of one parent or guardian binds both parents or guardians in reference to this agreement)